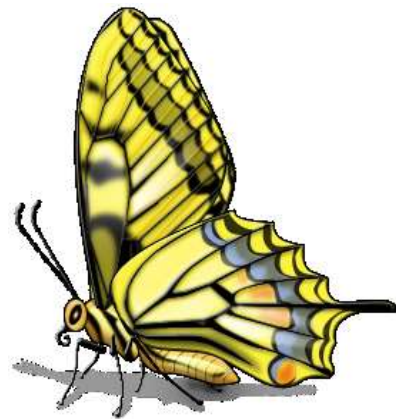


*Support the school garden;
The Karen Nash Memorial Butterfly Garden.
The CLOTHING DROP-OFF SHED ARRIVED
at Memorial School.*

Please gather CLEAN, BAGGED ITEMS:

**COATS, BLANKETS, LINENS,
STUFFED ANIMALS, and
CLOTHING ITEMS OF ALL SIZES**



**Donate Clothing Drive items to our NEW Used Clothing
Drop-Off SHED at Memorial School,
300 West Stewart St., Washington Boro
School parking lot, by the school garage.
*Items WILL NOT be cut up or shredded.***



ACCEPTING:

CLEAN wearable **CLOTHING**: coats, snowsuits, baby clothes, gowns, suits, scarves, gloves, shoes, sneakers, clean boots, belts, purses, blankets, linens, pillowcases, towels, sheets, sleeping bags, crib linens, curtains, backpacks, & stuffed animals.

NO: rags, fabric scraps, toys, household goods; it is costly to dispose of unacceptable items. *Please* do **NOT** donate items unless they are clean.

DONATION RECEIPTS are available at the Drop-Off Shed.

Please drive **SLOWLY** into the school's front entrance following the one way direction to the right. Follow the circular drive past the school building & gym and pull into the right lot. See the shed in front of you by the school garage.

Please plan a drop off time before or after school, or on weekends when the school driveway entrance is open to traffic. Always follow the one way traffic pattern to the right, around the circle.

The KNMBG is a 501-(c)-3 all-volunteer, educational organization that depends on donations, fundraisers and youth & adult volunteers. Please "like us" on the

Facebook page titled: Karen Nash Memorial Butterfly Garden.

Special Thanks to Turnkey Enterprises for the Drop-Off Shed.

THANK YOU FOR YOUR CONTRIBUTION.